



MONITOR REMOTE LANS OR WANS BY ADDING SOFTWARE OR HARDWARE PROBES TO OBSERVER



Troubleshoot and document local or remote segments without leaving your desk.



Network Instruments offers both Hardware and Software-based Probes to accommodate all network speeds and specific network configurations. Hardware-based Probes are specific to administrators that require wire-speed, full-duplex gigabit capture, analyzation, trending and statistics. Software-based Probes are appropriate for network speeds up to 100 MB (Ethernet, Token Ring, FDDI and 802.11b Wireless) and are a good solution for monitoring low utilization gigabit networks via a tap port on a switch.



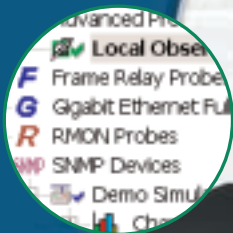
Hardware-Based Gigabit Probes

Gigabit Observer Probes offer wire-speed, full-duplex, gigabit analysis and reporting capabilities to any Expert Observer or Observer Suite console.

Gigabit Observer Probes combine high performance gigabit analysis with the very best price/performance ratio in the industry.

Gigabit Observer Probes comes in two formats: The Gigabit Probe Kit and the Rack-Mountable Complete Probe. Each option has been designed to give the administrator flexibility in implementation and performance. Both Probes' functionality include full-duplex, wire-speed gigabit analysis for optical (fiber) SX/LX and copper gigabit networks.

Probes include splitters that provide a copy of the gigabit signal while maintaining the gigabit signal through the network connection. Once a splitter is added to the gigabit connection the Probe can be attached or removed without interruption of the network.



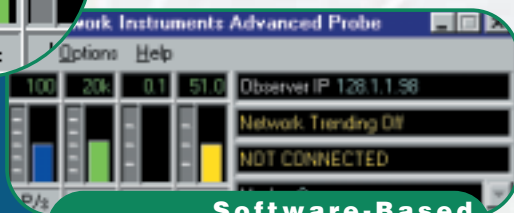
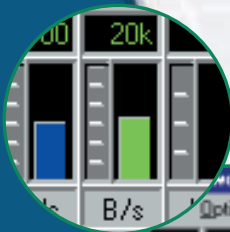
Hardware-Based Rack-Mount Probe

Software-Based 10/100/Gigabit, 802.11 Wireless, 4/16/100 TR and FDDI Probes

Adding Advanced or RMON Probes allows remote monitoring of LANs/WLANs/WANs through any Observer console.

Observer's software-based Probes can operate in one of two modes: Advanced or RMON, and any Probe can be installed as either.

Probes may also run unattended, collecting network statistics for later retrieval by an Observer console. Probes can be remotely auto-updated. For network speeds of 100MB or less, software-based Probes are a perfect solution for all capture, trending and statistical analysis.



Software-Based Advanced/Gigabit Probe



Gigabit Probe Kit and Rack-Mountable Complete Probes

The hardware that drives Gigabit Observer Probes is based around a dual receive gigabit adapter Network Instruments manufactures specifically for the purpose of wire-speed, full-duplex network analysis. The software that drives Gigabit Observer is based in the Windows 2000/XP environment and integrates perfectly with all security and policy based schemes that may be in place. No need to learn a new operating system or to try and integrate some foreign operating system into your network – if you know how to administer Windows, you already know how to work with Network Instruments' hardware.

The Hardware-Based Gigabit Observer Probe Comes in Two Formats:

- 1. The Gigabit Probe Kit (for local or remote use).** The Probe Kit includes Network Instruments' 64-bit PCI gigabit adapter, the Gigabit Probe software, as well as all required cabling and either an optical or copper splitter. The Gigabit Probe Kit is designed to be installed into a user provided system (requirements described below). Once integrated into a system, the Gigabit Probe will report to any Expert Observer or Observer Suite console. Each Probe Kit can monitor one gigabit segment or link. The Gigabit Probe Kit includes a 10/100 Ethernet adapter link for communication to the Observer console.
- 2. A 19" Rack-Mountable Complete Probe (for local or remote use).** The rack-mount Probe integrates the Probe Kit (see above) into an industry standard dual processor rack system completely configured and ready for wire-speed,

full-duplex analysis. The rack-mountable system runs Windows 2000 Professional and the Gigabit Probe software. The Rack-Mount Probe will report to any Expert Observer or Observer Suite console. Each Rack-Mount Probe can monitor one gigabit segment or link.

System Requirements

Gigabit Probe Kit: For wire-speed analysis, a dual processor-based system running at 1.2 Ghz (or more) with a free 64-bit PCI slot (66 Mhz slot 64-bit PCI bus), a free 32-bit PCI slot (for the a 10/100 adapter), 512MB RAM, 20 GB HD, CD Drive, keyboard and mouse and Windows 2000/XP. Once installed into the above described PC, the Gigabit Probe Kit will report to any Expert Observer or Observer Suite console (at least one console is required for analysis).

19" Rack-Mount Probe: The rack-mount Probe is a complete system, and only requires a Expert Observer or Observer Suite console to report to.

Software-Based Advanced/RMON Probes

The Advanced Probe—Offers a superset of RMON functionality. The Probe software runs on a standard non-dedicated Windows 98/NT/2000/XP PC and requires no additional hardware. For NT/2000/XP, a Probe can be run as a service. Additionally, Probes can collect trending data without being connected to Observer (unattended mode).

The RMON Probe—An industry-standard RMON1/2 compliant Probe application. All 19 RMON groups are supported with full adherence to all RFCs. RMON Probes can support up to 10 interfaces. A Probe running RMON mode can report to any RMON or SNMP management console that supports RMON1/2. RMON Probes can also be run as a service on NT/2000/XP.

Hardware-Based Probes

- **Completely Configured and Ready** for Wire-Speed, Full-Duplex Analysis
- **Supports Optical (Fiber) LX/SX** and Copper Gigabit Networks
- **Reports to Any Expert Observer** or Observer Suite Console
- **Runs Windows® 2000 Professional**
- **Gigabit Probes** Available in Two Formats



Software-Based Probes

- **Low Cost**—Complete Observer/RMON Data Collection for Remote Sites, Local or Remote Segments, or Switches
- **Auto-Update Feature** Updates Probes to the Latest Software Version Directly from the Observer Console.
- **A Web Accessible** Quick Snapshot
- **Full Password Protection** of Data



Corporate Headquarters:
Network Instruments, LLC
Fourth Floor
8800 West Highway Seven
Minneapolis, MN 55426 USA
(800) 526-7919 Toll Free
(952) 932-9899 Voice
(952) 932-9545 FAX

European Office:
Network Instruments Ltd.
Brewery House
Black Eagle Close
Westerham TN16 1RG
UNITED KINGDOM
+44 (0) 1959 569880 Voice
+44 (0) 1959 569881 FAX

www.NETWORKINSTRUMENTS.com